

Technical Documentation

FD7/54
Farm Duty | BECSFD

Date: November 29, 2016

Technical Data Sheet

Motor Type: BECSFD

Catalogue No: FD7/54

Nameplate Information

HP	Pole	RPM	Frame	Voltage	Hz	Phase
7.5	4	1740	213T	230	60	1
Enclosure	Ins. Class	Service Factor	Time Rating	NEMA Design	Rated Amb.	Rated Altitude
TEFC	F	1.15	Continuous		-40 to 40 °C	<3300 ft

Typical Performance

Efficiency (%)				Power Factor (%)		
Full Load		3/4 Load	1/2 Load	Full Load	3/4 Load	1/2 Load
Nom.	Min.					
80.0				84.5		
Torque				Current (A)		
Full Load (lb-ft)	Locked Rotor (% FLT)	Pull Up (% FLT)	Break Down (% FLT)	No Load	Full Load	Locked Rotor
22.60	350		240		36.0	218.00
NEMA KVA Code	Inertia (WR ²)			Safe Stall Time (s)		Noise Level Sound Press. dB(A)
	Rotor (lb-ft ²)	NEMA Load (lb-ft ²)	Max. Allowable (lb-ft ²)	Cold	Hot	

VFD Duty Information

Speed Range			VFD		S.F.
Constant Torque	Variable Torque	Constant Power	Carrier	Type	

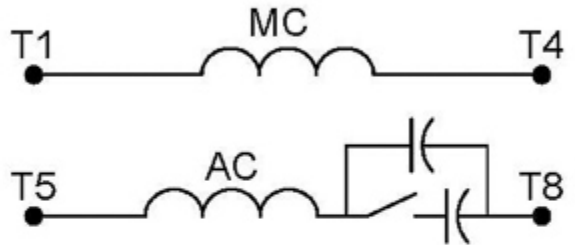
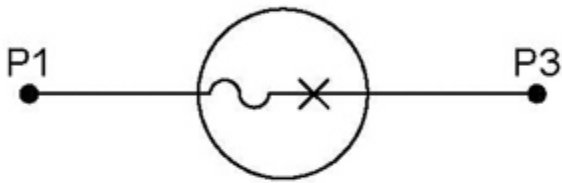
Additional Information

Bearings		Approx. Weight
DE	NDE	lbs
6308ZZ	6306ZZ	178

Hazardous Locations Information

Temp Code (Sinewave / VFD)	/
----------------------------	---

Connection Diagram



6 LEAD SINGLE VOLTAGE CAP START/CAP RUN			
ROTATION	L1	L2	JOIN
CCW	P1	4&5	1&P3&8
CW	P1	4&8	1&P3&5

WD_6CSCR