

Technical Documentation

**FD0054**  
**Farm Duty | BECSFD**

Date: November 29, 2016

### Technical Data Sheet

Motor Type: BECSFD

Catalogue No: FD0054

#### Nameplate Information

HP	Pole	RPM	Frame	Voltage	Hz	Phase
5	4	1750	184T	230	60	1
Enclosure	Ins. Class	Service Factor	Time Rating	NEMA Design	Rated Amb.	Rated Altitude
TEFC	F	1.15	Continuous		-40 to 40 °C	<3300 ft

#### Typical Performance

Efficiency (%)				Power Factor (%)		
Full Load		3/4 Load	1/2 Load	Full Load	3/4 Load	1/2 Load
Nom.	Min.					
78.5				69.0		
Torque				Current (A)		
Full Load (lb-ft)	Locked Rotor (% FLT)	Pull Up (% FLT)	Break Down (% FLT)	No Load	Full Load	Locked Rotor
15.00	340		300		30.0	192.00
NEMA KVA Code	Inertia (WR <sup>2</sup> )			Safe Stall Time (s)		Noise Level Sound Press. dB(A)
	Rotor (lb-ft <sup>2</sup> )	NEMA Load (lb-ft <sup>2</sup> )	Max. Allowable (lb-ft <sup>2</sup> )	Cold	Hot	

#### VFD Duty Information

Speed Range			VFD		S.F.
Constant Torque	Variable Torque	Constant Power	Carrier	Type	

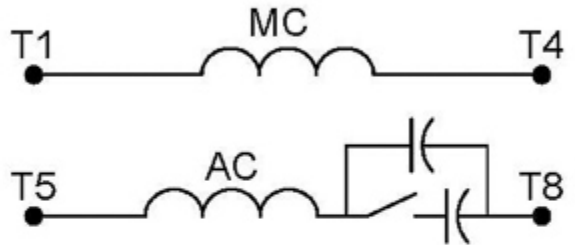
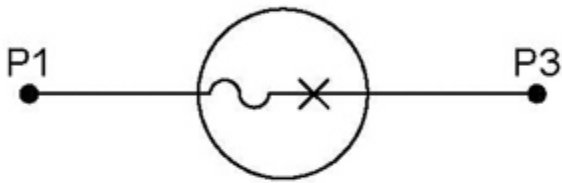
#### Additional Information

Bearings		Approx. Weight
DE	NDE	lbs
6306ZZ	6306ZZ	103

#### Hazardous Locations Information

Temp Code (Sinewave / VFD)	/
----------------------------	---

**Connection Diagram**



6 LEAD SINGLE VOLTAGE CAP START/CAP RUN			
ROTATION	L1	L2	JOIN
CCW	P1	4&5	1&P3&8
CW	P1	4&8	1&P3&5

WD\_6CSCR