

# W40 NEMA Premium Motors

## ODP

### Standard Features

- Motors are compliant with DOE and NRCAN
- Three-phase, 2, 4 and 6 pole, 60Hz
- Voltage: 230/460V, 575V
- Cast Iron Frames
- Cast Iron endshields and terminal box
- Degree of protection:
  - ODP (IP23)
  - WP11 (IP24)
- Ball bearings
- 1045 heat treated and stress relieved carbon steel shaft up to frame 364/5T, all 2 pole motors
- 4140 for 404/5T shaft upwards in 4 and 6 pole motors
- Class "F" insulation for all frames. Temperature rise limited to Class "B" (80K)
- 575V rated motors have Spike Resistant WISE wire.
  - Protects against IGBT voltage spikes up to 2400V.
  - Exceeds NEMA MG1 Part 31.4.4.2
- NEMA design "B"
- Service Factor: 1.15
- Continuous Duty (S1)
- 104°F (40°C) ambient temperature
- Paint Plan: 203A
- Color: RAL 5009 (Blue)
- Paint: Synthetic Enamel alkyd resin base
- Stainless steel nameplate with laser etching
- Cooling system with finned rotor
- Regreasable bearings



Frames 254T to 447/9T:  
 Safe Area  
 Option for Frames 5010/11 and up:  
 Class I, Div 2, Groups A,B,C & D  
 Class I, Zone 2, IIC

Inverter Ratings				
Frames	Poles	Constant Torque	Variable Torque	VFD
254T - 404/5T < 150HP	All	4:01	10:1	Any
404/5T - 444/5T ≥ 150HP	All	2:01		
5010/11 - L6808/09	All	10:01		
See page 7.6 for details				

### Optional Features

- 50 Hz
- Special voltages
- NEMA C & D flanges
- Specially designed shaft
- Second shaft end
- Thermistors, Thermostats or RTD's (PT100)
- Auxiliary terminal box
- Roller bearings
- Shaft grounding (Aegis or WEG)
- IEC metric frames (on request) for frames 160M to 280S/M
- F2 and F3 mount
- Drip cover
- UL Listed fire pump duty
- No feet



1.40

General Purpose Three Phase Motors



# W40 NEMA Premium Motors

## ODP - Purchasing Data

Rated Output		NEMA Frame	List Price	List Price with 'C' Flange	List Price with 'D' Flange	Part Number	Full Load Current		Full Load Efficiency	Shipping Weight (lbs.)	Overall Length "C" Dim. (in.)	Shaft Diameter "U" Dim. (in.)
HP	RPM						460V	575V				
15	1800	254T	\$1,406	\$1,637	\$1,670	DP015X04NP	18.6	14.9	93.0	254	20.669	1.625
	1200	284T	\$2,618	\$2,903	\$2,962	DP015X06NP	17.8	14.2	91.7	400	23.386	1.875
	3600	254T	\$1,748	\$1,979	\$2,018	DP020X02NP	24.6	19.7	91.0	179	20.669	1.625
20	1800	256T	\$1,802	\$2,033	\$2,074	DP020X04NP	24.8	19.8	93.0	295	22.401	1.625
	1200	286T	\$3,175	\$3,460	\$3,529	DP020X06NP	24.0	19.2	92.4	437	24.882	1.875
	3600	256T	\$2,122	\$2,352	\$2,400	DP025X02NP	29.8	23.8	91.7	243	22.401	1.625
25	1800	284T	\$1,983	\$2,269	\$2,314	DP025X04NP	29.9	23.9	93.6	342	23.386	1.875
	1200	324T	\$3,332	\$3,676	\$3,750	DP025X06NP	30.4	24.3	93.0	509	26.181	2.125
	3600	284TS	\$2,583	\$2,869	\$2,926	DP030X02NP	34.8	27.8	92.4	333	22.000	1.625
30	1800	286T	\$2,386	\$2,672	\$2,725	DP030X04NP	35.4	28.3	94.1	419	24.882	1.875
	1200	326T	\$3,685	\$4,029	\$4,109	DP030X06NP	36.0	28.8	93.6	630	27.667	2.125
	3600	286TS	\$3,111	\$3,396	\$3,464	DP040X02NP	47.1	37.7	93.0	417	23.504	1.625
40	1800	324T	\$3,045	\$3,389	\$3,457	DP040X04NP	48.3	38.6	94.1	529	26.181	2.125
	1200	364/5T	\$5,515	\$6,218	\$6,343	DP040X06NPW40	47.1	37.7	94.1	813	29.65	2.375
	3600	324TS	\$3,654	\$3,981	\$4,061	DP050X02NP	59.1	47.3	93.6	496	24.685	1.875
50	1800	326T	\$3,437	\$3,764	\$3,839	DP050X04NP	59.9	47.9	94.5	573	27.667	2.125
	1200	364/5T	\$5,753	\$6,456	\$6,585	DP050X06NPW40	58.8	47.0	94.1	948	29.65	2.375
	3600	326TS	\$4,321	\$4,648	\$4,741	DP060X02NP	71.0	56.8	93.6	582	26.181	1.875
60	1800	364/5T	\$4,586	\$5,289	\$5,395	DP060X04NPW40	69.9	55.9	95.0	825	29.65	2.375
	1200	404/5T	\$6,863	\$7,566	\$7,717	DP060X06NPW40	70.3	56.2	94.5	1,007	34.020	2.875
	3600	364/5TS	\$6,033	\$6,737	\$6,871	DP075X02NPW40	81.5	65.2	94.1	695	27.52	1.875
75	1800	364/5T	\$5,513	\$6,216	\$6,341	DP075X04NPW40	83.5	66.8	95.0	825	29.65	2.375
	1200	404/5T	\$7,007	\$7,710	\$7,864	DP075X06NPW40	85.9	68.7	94.5	1,188	34.020	2.875
	3600	364/5TS	\$8,376	\$9,079	\$9,261	DP100X02NPW40	111	88.8	94.5	825	27.52	1.875
100	1800	404/5T	\$7,064	\$7,767	\$7,922	DP100X04NPW40	113	90.4	95.4	1,052	34.020	2.875
	1200	444/5T	\$12,768	\$13,870	\$14,147	DP100X06NPW40	125	100	95.0	1,635	38.108	3.375
	3600	404/5TS	\$10,191	\$10,895	\$11,112	DP125X02NPW40	136	109	94.5	986	31.020	2.125
125	1800	404/5T	\$8,767	\$9,471	\$9,660	DP125X04NPW40	136	109	95.4	1,144	34.020	2.875
	1200	444/5T	\$13,429	\$14,530	\$14,821	DP125X06NPW40	158	126	95.0	1,914	38.108	3.375
	3600	404/5TS	\$13,312	\$14,016	\$14,296	DP150X02NPW40	163	130	94.5	1,246	31.020	2.125
150	1800	444/5T	\$12,267	\$13,368	\$13,635	DP150X04NPW40	166	133	95.8	1,433	38.108	3.375
	1200	444/5T	\$14,295	\$15,397	\$15,705	DP150X06NPW40	183	146	95.4	2,208	38.108	3.375
	3600	444/5TS	\$17,915	\$19,016	\$19,397	DP200X02NPW40	223	178	95.0	1537	34.358	2.375
200	1800	444/5T	\$15,009	\$16,111	\$16,433	DP200X04NPW40	229	183	95.8	1740	38.108	3.375
	1200	444/5TS	P.O.A	P.O.A	P.O.A	DP200X06NPW40	229	183	95.8	1740	34.358	2.375
	3600	444/5TS	\$21,471	\$22,572	\$23,023	DP250X02NPW40	273	218	95.0	1806	34.358	2.375
250	1800	444/5T	\$18,515	\$19,617	\$20,009	DP250X04NPW40	275	220	95.8	2029	38.108	3.375
	1200	444/5TS	P.O.A	P.O.A	P.O.A	DP250X06NPW40	275	220	95.8	2029	34.358	2.375
	3600	447/9T	P.O.A	P.O.A	P.O.A	DP250X04NPSW40	300	240	95.4	2426	46.709	3.375
300	1800	444/5TS	\$25,211	\$26,312	\$26,839	DP300X02NPW40	323	258	95.4	2007	34.358	2.375
	1200	447/9T	P.O.A	P.O.A	P.O.A	DP300X04NPW40	324	259	95.8	2095	46.709	3.375
	3600	447/9TS	P.O.A	P.O.A	P.O.A	DP300X06NPW40	358	286	95.4	2646	46.709	3.375
350	1800	447/9TS	P.O.A	P.O.A	P.O.A	DP350X02NPW40	384	307	95.4	1819	43.00	2.375
	1200	447/9T	P.O.A	P.O.A	P.O.A	DP350X04NPW40	393	314	95.8	2315	46.709	3.375
	3600	447/9TS	P.O.A	P.O.A	P.O.A	DP400X02NPW40	443	354	95.8	1896	43.00	2.375
400	1800	447/9T	P.O.A	P.O.A	P.O.A	DP400X04NPW40	453	362	95.8	2536	46.709	3.375
	1200	447/9TS	P.O.A	P.O.A	P.O.A	DP450X02NPW40	478	382	96.2	2073	43.00	2.375
	3600	5010/11	P.O.A	P.O.A	P.O.A	DP450X04NPW40	507	406	96.2	3087	62.88	3.625
450	1800	447/9TS	P.O.A	P.O.A	P.O.A	DP500X02NPW40	536	429	96.2	2139	43.00	2.375
	1200	5010/11	P.O.A	P.O.A	P.O.A	DP500X04NPW40	568	454	96.2	3308	62.88	3.625
	3600	447/9TS	P.O.A	P.O.A	P.O.A	DP550X02NPW40	580	464	96.2	2271	43.00	2.375
550	1800	5010/11	P.O.A	P.O.A	P.O.A	DP550X04NPW40	600	480	96.2	3528	62.88	3.625
	1200	447/9TS	P.O.A	P.O.A	P.O.A	DP600X02NPW40	638	510	96.2	2359	43.00	2.375
	3600	5010/11	P.O.A	P.O.A	P.O.A	DP600X04NPW40	660	528	96.2	3749	62.88	3.625
600	1800	L5010/11	P.O.A	P.O.A	P.O.A	DP600X04NPW40L5010	692	554	96.2	4851	65.086	4.375
	1200	5010/11	P.O.A	P.O.A	P.O.A	DP650X02NPW40	715	572	95.8	2977	57.00	2.625
	3600	L5010/11	P.O.A	P.O.A	P.O.A	DP650X04NPW40	737	590	96.2	5292	65.086	4.375
700	1800	5010/11	P.O.A	P.O.A	P.O.A	DP700X02NPW40	767	614	95.8	3418	57.00	2.625
	1200	L5810/11	P.O.A	P.O.A	P.O.A	DP700X04NPW40	789	631	96.4	5954	70.444	5.125
	3600	5010/11	P.O.A	P.O.A	P.O.A	DP750X02NPW40	827	662	96.0	3308	57.00	2.625
750	1800	L5010/11	P.O.A	P.O.A	P.O.A	DP750X02NPW40L5010	825	660	96.2	4190	59.211	3.250
	1200	L5010/11	P.O.A	P.O.A	P.O.A	DP750X04NPW40	870	696	96.2	5954	65.086	4.375
	3600	L5810/11	P.O.A	P.O.A	P.O.A	DP750X04NPW40L5810	858	686	96.4	6174	70.444	5.125
800	1800	5010/11	P.O.A	P.O.A	P.O.A	DP800X02NPW40	885	708	96.2	3528	57.00	2.625
	1200	L5010/11	P.O.A	P.O.A	P.O.A	DP800X02NPW40L5010	885	708	96.2	4410	59.211	3.250
	3600	L5810/11	P.O.A	P.O.A	P.O.A	DP800X02NPW40L5810	860	688	96.8	4300	65.57	3.375
850	1800	5010/11	P.O.A	P.O.A	P.O.A	DP800X04NPW40	906	725	96.2	5954	65.086	4.375
	1200	L5010/11	P.O.A	P.O.A	P.O.A	DP850X02NPW40	934	747	96.2	3638	57.00	2.625
	3600	L5810/11	P.O.A	P.O.A	P.O.A	DP850X04NPW40	953	762	96.5	6615	70.444	5.125
900	1800	5010/11	P.O.A	P.O.A	P.O.A	DP900X02NPW40	979	783	96.2	3749	59.211	3.250
	1200	L5810/11	P.O.A	P.O.A	P.O.A	DP900X02NPW40L5810	962	770	96.8	4631	65.57	3.375
	3600	L5010/11	P.O.A	P.O.A	P.O.A	DP1000X04NPW40	1010	808	96.5	7166	70.444	5.125
1000	1800	L5010/11	P.O.A	P.O.A	P.O.A	DP1000X02NPW40	1120	896	96.5	5072	59.211	3.250
	1200	L5810/11	P.O.A	P.O.A	P.O.A	DP1000X02NPW40L5810	1070	856	97.0	5182	65.57	3.375
	3600	L5810/11	P.O.A	P.O.A	P.O.A	DP1000X04NPW40	1150	920	96.5	7718	70.444	5.125
1100	1800	L5810/11	P.O.A	P.O.A	P.O.A	DP1100X02NPW40	1160	928	97.0	6395	65.57	3.375
	1200	L5810/11	P.O.A	P.O.A	P.O.A	DP1100X04NPW40	1220	976	96.5	7718	70.444	5.125
	3600	L5810/11	P.O.A	P.O.A	P.O.A	DP1250X02NPW40	1310	1048	97.0	6615	65.57	3.375

Flange: Replace 'DP' with 'CP' for C Flange  
 Replace 'DP' with 'DD' for D Flange  
 Voltage: Replace 'X' with '4' for 208-230/460V  
 Replace 'X' with '5' for 575V

# W40 NEMA Premium Motors

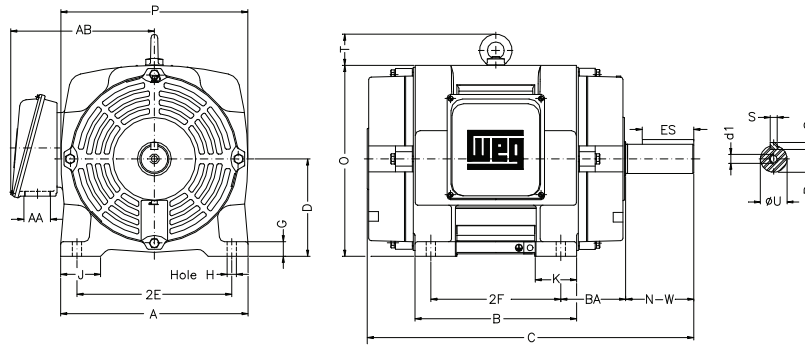
## ODP - Electrical Data

Rated Output		Full Load Speed (RPM)	NEMA Frame	Full Load Current (A)			Locked rotor current (I/Ln)	Locked rotor torque	Breakdown torque	Locked rotor time (s)	Weight (lb)	Noise level	Service Factor	Efficiency (%)			Power factor		
HP	kW			230V	460V	575V								50%	75%	100%	50%	75%	100%
15	11	1775	254T	37.3	18.6	14.9	6.7	290%	300%	14	254	59	1.15	91.7	92.4	93.0	0.60	0.72	0.80
		1180	284T	35.5	17.8	14.2	6.6	260%	280%	12	400	58	1.15	89.5	91.0	91.7	0.72	0.81	0.85
		3520	254T	49.3	24.6	19.7	6.0	190%	250%	12	179	66	1.15	89.5	90.2	91.0	0.71	0.80	0.84
20	15	1770	256T	49.5	24.8	19.8	6.3	260%	280%	12	295	60	1.15	91.7	93.0	93.0	0.63	0.72	0.82
		1175	286T	48.0	24.0	19.2	6.3	220%	240%	18	437	58	1.15	91.7	92.4	92.4	0.74	0.83	0.85
25	18.5	3530	256T	59.5	29.8	23.8	6.5	200%	260%	9	243	67	1.15	91.0	91.7	91.7	0.73	0.82	0.85
		1770	284T	59.8	29.9	23.9	6.7	250%	280%	15	342	62	1.15	92.4	93.0	93.6	0.67	0.78	0.83
		1180	324T	60.8	30.4	24.3	6.0	200%	240%	18	509	60	1.15	91.7	92.4	93.0	0.67	0.77	0.82
30	22	3540	284TS	69.5	34.8	27.8	6.4	220%	280%	10	333	72	1.15	92.4	93.0	92.4	0.77	0.84	0.86
		1770	286T	70.8	35.4	28.3	6.7	260%	280%	14	419	63	1.15	93.6	94.1	94.1	0.70	0.80	0.83
		1180	326T	72.0	36.0	28.8	6.2	220%	270%	17	630	60	1.15	91.7	93.0	93.6	0.65	0.77	0.82
40	30	3535	286TS	94.3	47.1	37.7	6.4	200%	260%	10	417	73	1.15	91.7	93.0	93.0	0.74	0.83	0.86
		1775	324T	96.5	48.3	38.6	6.2	220%	230%	28	529	64	1.15	93.6	94.1	94.1	0.68	0.78	0.83
		1185	364/5T	94.2	47.1	37.7	6.4	180%	230%	22	787	68	1.15	93.6	94.1	94.1	0.74	0.82	0.85
50	37	3555	324TS	118	59.1	47.3	6.4	220%	260%	28	496	74	1.15	92.4	93.6	93.6	0.74	0.82	0.84
		1775	326T	120	59.9	47.9	6.3	240%	250%	12	573	65	1.15	94.1	94.5	94.5	0.70	0.79	0.82
		1185	364/5T	116	58.1	46.5	6.7	200%	250%	15	820	68	1.15	93.6	94.1	94.1	0.74	0.82	0.85
60	45	3555	326TS	142	71.0	56.8	6.2	200%	260%	24	582	75	1.15	93.0	93.6	93.6	0.77	0.84	0.85
		1780	364/5T	140	69.9	55.9	6.5	200%	240%	19	785	69	1.15	94.5	95.0	95.0	0.73	0.82	0.85
		1185	404/5T	141	70.3	56.2	6.7	240%	270%	16	975	68	1.15	91.7	94.5	94.5	0.73	0.82	0.85
75	55	3565	364/5TS	170	84.8	67.8	6.6	180%	260%	19	736	84	1.15	91.7	93.0	93.6	0.77	0.84	0.87
		1780	364/5T	171	85.5	68.4	6.8	190%	250%	14	811	69	1.15	94.5	95.0	95.0	0.73	0.82	0.85
		1185	404/5T	172	85.9	68.7	6.7	240%	270%	11	1,008	68	1.15	94.1	94.5	94.5	0.72	0.81	0.85
100	75	3560	364/5TS	232	116	92.8	6.6	180%	260%	13	774	84	1.15	92.4	93.6	93.6	0.77	0.84	0.87
		1780	404/5T	230	115	92.0	6.8	200%	250%	12	992	69	1.15	95.0	95.4	95.4	0.75	0.83	0.86
		1190	444/5T	254	127	102	6.1	200%	250%	13	1,301	69	1.15	94.5	95.0	95.0	0.61	0.71	0.78
125	90	3560	404/5TS	272	136	109	6.8	170%	260%	12	886	84	1.15	93.0	94.1	94.1	0.79	0.86	0.88
		1780	404/5T	276	138	110	6.9	220%	260%	10	1,072	69	1.15	95.0	95.4	95.4	0.75	0.83	0.86
		1190	444/5T	308	154	123	6.3	210%	280%	11	1,389	69	1.15	94.5	95.0	95.0	0.59	0.71	0.77
150	110	3555	404/5TS	334	167	134	6.6	160%	240%	9	931	84	1.15	93.6	94.1	94.1	0.79	0.86	0.88
		1785	444/5T	340	170	136	6.5	180%	250%	22	1,374	78	1.15	95.4	95.8	95.8	0.74	0.82	0.85
		1190	444/5T	366	183	146	6.4	210%	270%	11	1,563	69	1.15	94.5	95.0	95.4	0.62	0.73	0.79
200	150	3570	444/5TS	450	225	180	6.5	170%	230%	21	1400	85	1.15	93.0	94.5	95.0	0.79	0.86	0.88
		1785	444/5T	468	234	187	6.6	190%	250%	14	1446	78	1.15	95.4	95.8	95.8	0.72	0.80	0.84
		1785	444/5TS	468	234	187	6.6	190%	250%	14	1446	78	1.15	95.4	95.8	95.8	0.72	0.80	0.84
250	185	1185	447/9T	483	241	193	5.8	200%	220%	18	2205	79	1.15	95.0	95.4	95.4	0.69	0.78	0.82
		3570	444/5TS	556	278	222	6.7	170%	230%	16	1488	85	1.15	93.6	94.5	95.0	0.79	0.85	0.88
		1780	444/5T	578	289	231	6.4	210%	250%	9	1517	78	1.15	95.4	95.8	95.8	0.72	0.80	0.84
300	220	1780	444/5TS	578	289	231	6.4	210%	250%	9	1517	78	1.15	95.4	95.8	95.8	0.72	0.80	0.84
		1185	447/9T	600	300	240	6.5	220%	240%	18	2426	79	1.15	95.4	95.8	95.4	0.67	0.77	0.81
		3570	444/5TS	658	329	263	6.5	180%	240%	12	1535	85	1.15	95.0	95.4	95.4	0.80	0.86	0.88
350	260	1780	447/9T	648	324	259	7.1	220%	230%	10	2095	77	1.15	95.8	95.8	95.8	0.81	0.87	0.89
		1185	447/9T	715	358	286	6.7	220%	240%	18	2646	79	1.15	95.4	95.8	95.4	0.67	0.77	0.81
		3565	447/9TS	768	384	307	6.5	170%	250%	14	1819	87	1.15	95.0	95.4	95.4	0.83	0.88	0.89
400	300	1780	447/9T	785	393	314	6.6	200%	230%	10	2315	77	1.15	95.8	95.8	95.8	0.79	0.85	0.87
		3565	447/9TS	885	443	354	6.5	170%	250%	14	1896	87	1.15	95.4	95.8	95.8	0.83	0.88	0.89
		1780	447/9T	905	453	362	6.8	230%	230%	9	2536	77	1.15	95.8	95.8	95.8	0.78	0.85	0.87
450	330	3565	447/9TS	956	478	382	6.8	180%	250%	14	2073	87	1.15	95.8	96.2	96.2	0.84	0.89	0.90
		1787	5010/11	1014	507	406	6.8	220%	220%	18	3087	80	1.15	95.4	95.8	96.2	0.73	0.82	0.85
		3570	447/9TS	1072	536	429	7.1	190%	250%	14	2139	87	1.15	95.8	96.2	96.2	0.84	0.89	0.90
500	370	1787	5010/11	1136	568	454	7.0	230%	230%	17	3308	80	1.15	95.4	95.8	96.2	0.73	0.82	0.85
		3565	447/9TS	1160	580	464	7.2	200%	250%	14	2271	87	1.15	95.8	96.2	96.2	0.84	0.89	0.90
		1787	5010/11	1200	600	480	6.8	220%	220%	16	3528	80	1.15	95.6	96.2	96.2	0.76	0.84	0.87
600	440	3570	447/9TS	1276	638	510	7.9	200%	270%	14	2359	87	1.15	95.8	96.2	96.2	0.83	0.89	0.90
		1787	5010/11*	1320	660	528	6.8	220%	220%	12	3749	80	1.00	95.8	96.2	96.2	0.76	0.84	0.87
		3570	5010/11	1430	715	572	6.5	180%	230%	12	2977	89	1.15	95.0	95.4	95.8	0.78	0.85	0.88
650	480	1785	L5010/11	1474	737	590	6.0	150%	220%	25	5292	80	1.15	95.4	96.2	96.2	0.76	0.83	0.85
		3570	5010/11	1534	767	614	6.8	200%	240%	16	3418	89	1.15	95.4	95.8	95.8	0.79	0.86	0.88
		1790	L5810/11	1578	789	631	6.8	160%	200%	22	5954	85	1.15	96.2	96.4	96.4	0.75	0.83	0.85
750	560	3580	5010/11	1654	827	662	7.5	210%	260%	12	3308	89	1.15	95.4	96.0	96.0	0.76	0.83	0.87
		1785	L5010/11	1740	870	696	6.5	170%	230%	25	5954	80	1.15	95.4	96.2	96.2	0.73	0.81	0.84
		3575	5010/11	1770	885	708	7.4	200%	250%	12	3528	89	1.15	95.8	96.2	96.2	0.78	0.85	0.87
800	590	1785	L5010/11	1812	906	725	6.2	160%	220%	25	5954	80	1.00	95.4	96.2	96.2	0.74	0.82	0.85
		3575	5010/11*	1868	934	747	7.4	200%	250%	10	3638	89	1.00	95.8	96.2	96.2	0.78	0.85	0.88
		1790	L5810/11	1906	953	762	6.8	160%	210%	20	6615	85	1.15	96.4	96.5	96.5	0.77	0.84	0.86
900	660	3575	5010/11*	1958	979	783	7.2	200%	250%	8	3749	89	1.00	95.8	96.2	96.2	0.78	0.85	0.88
		1790	L5810/11	2020	1010	808	7.0	200%	220%	20	7166	85	1.15	96.4	96.5	96.5	0.75	0.83	0.86
		3575	L5010/11	2240	1120	896	5.2	100%	180%	25	5072	89	1.00	96.2	96.5	96.5	0.80	0.85	0.87
1000	750	1790	L5810/11	2300	1150	920	7.2	170%	200%	20	7718	85	1.00	96.4	96.5	96.5	0.78	0.84	0.85
		3580	L5810/11	2320	1160	928	6.5	120%	200%	20	6395	94	1.00	96.5	97.0	97.0	0.84	0.87	0.89
		1790	L5810/11	2440	1220	976	7.2	180%	210%	20	7718	85	1.00	96.4	96.5	96.5	0.77	0.84	0.85
1250	900	3580	L5810																

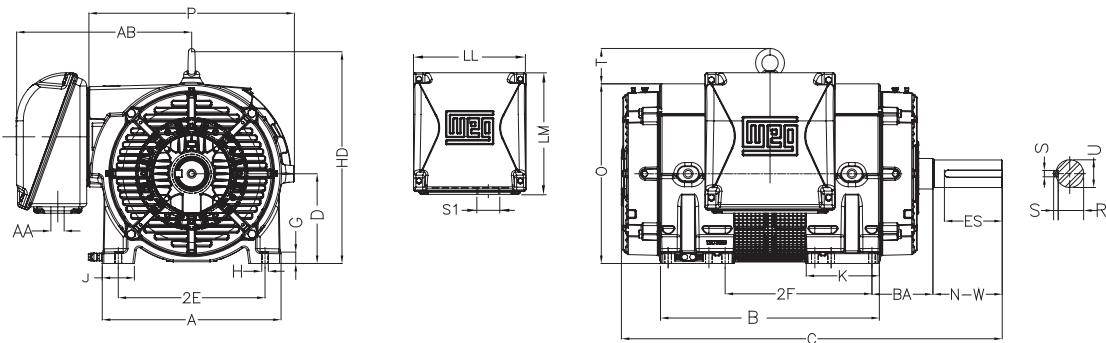
# W40 NEMA Premium Motors

## ODP - Mechanical Data

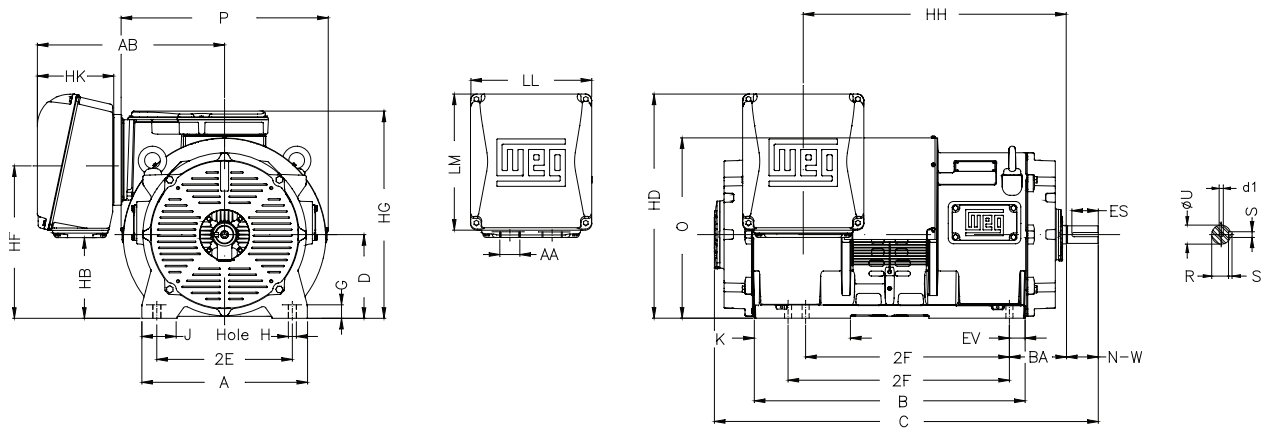
### Frames 254T to 444/5T



### Frame 447/9T



### Frames L5010 to L5810



# W40 NEMA Premium Motors

## ODP - Mechanical Data

NEMA FRAME	2E	J	A	AB	P	2F	K	B	BA	U	d1	N-W	Es	S	R		
254T	10.000	2.520	12.130	10.079	11.812	8.250	2.560	10.100	4.250	1.625	A4	4.000	2.756	0.375	1.406		
256T						10.000		11.732									
284TS	11.000	3.150	13.780	10.886	13.700	2.960	11.574	4.750	1.875			3.250	2.480	0.500	1.594		
284T																4.622	3.149
286TS									3.250			2.480	0.375	1.406			
286T									4.622			3.149	0.500	1.594			
324TS	12.500	3.230	15.160	11.496	15.118	3.350	13.070	5.250	3.750			2.756			1.844		
324T									2.125			5.250	3.937				
326TS								1.875	3.750			2.756	1.844				
326T								2.125	5.250			3.937	1.844				
364/5TS	14.000	3.520	17.170	15.580	18.500	11.250/12.250	4.850	15.320	5.875	1.875	DUNC 3/4"-10	3.748	1.968	0.625	2.019		
364/5T						12.250/13.750						5.650	17.870			6.625	2.375
404/5TS	16.000	3.940	19.920	18.710	22.470	14.500/16.500	6.820	19.730	7.500			2.125	4.250	2.756	0.500	1.842	
404/5T												2.875	7.250	5.512	0.750	2.449	
444/5TS	18.000	2.940	21.260	18.710	22.470	14.500/16.500	6.820	19.730	7.500			2.375	4.750	3.000	0.625	2.021	
444/5T												3.375	8.500	7.087	0.875	2.880	
447/9TS	18.000	3.940	21.929	21.466	25.197	20.000/25.000	9.000	26.819	7.500			2.375	4.750	3.000	0.625	2.021	
447/9T												3.375	8.500	7.087	0.875	2.880	
5010/11 - 2P	20.000	5.236	24.724	28.812	30.670	32.000/36.000	14.200	40.260	8.504			3.625	DUNC 3/4"-10	4.750	3.000	0.625	2.275
5010/11												3.625		10.630	8.861	0.875	3.134
L5010/11 - 2P	20.000	5.140	24.803	34.908	34.095	32.000/36.000	10.685	42.256	8.500	3.250	DUNC 3/4"-10	5.750	4.331	0.750	2.831		
L5010/11										4.375	DUNC 1"-8	11.625	8.661	1.000	3.817		
L5810/11 - 2P	23.000	6.710	29.530	34.908	39.976	36.000/40.000	10.810	46.785	10.000	3.375	DUNC 7/8"-9	6.750	5.512	0.875	2.880		
L5810/11										5.125	DUNC 1 1/4"	11.625	9.842	1.250	4.423		

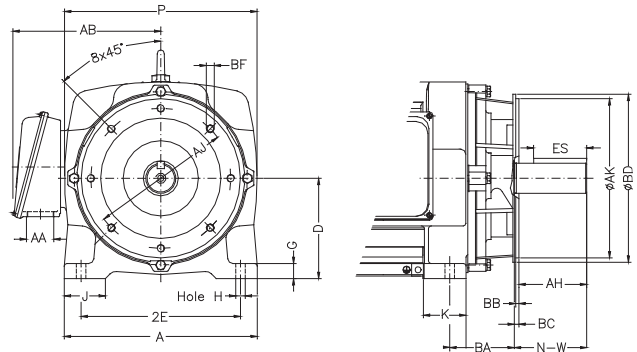
NEMA FRAME	D	G	O	LL	LM	HB	HD	HF	HG	HH	HK	Hole H	C	AA	Bearings	
															Drive end	Non-drive end
254T	6.250	0.787	12.204	6.300	6.693							0.531	20.669	NPT 1 1/2"	6309 Z-C3	6209 Z-C3
256T	6.250												22.401			
284TS	7.000	1.102	13.858	10.590	11.260							0.656	22.000	NPT 2"	6311 Z-C3	6211 Z-C3
284T													23.386			
286TS													23.504	6311 Z-C3	6211 Z-C3	
286T													24.882			
324TS	8.000	1.299	15.551	7.874	8.268						0.656	24.685	NPT 2"	6312 Z-C3	6212 Z-C3	
324T												27.667				
326TS	9.000	1.130	18.410	10.590	11.260	4.26				12	0.657	26.181	NPT 3"	6314 C3	6212-Z-C3	
326T												29.650				
364/5TS	10.000	1.130	19.410	10.590	11.260	5.26				13.5	0.807	31.020	NPT 3"	6316 C3	6212-Z-C3	
364/5T												34.020				
404/5TS												31.020	6316 C3	6212-Z-C3		
404/5T												34.020				
405TS	11.000	1.130	21.950	14.940	15.060	4.88			15.75	0.081	34.360	2xNPT 3"	6314 C3	6314 C3		
405T											38.110		6319 C3			
444/5TS	11.000	1.400	22.000	15.905	17.717					0.081	43.000	2xNPT 4"	6314	6314 C3		
444/5T											46.709		6319			
447/9TS	12.500	1.972	27.150	18.090	21.428	13.732	34.850	25.042	32.323	39.331	11.410	1.102	2xNPT 4"	57.000	6314 C3	6314 C3
447/9T														62.880	6319 C3	6314 C3
5010/11 - 2P	12.500	1.873	29.527	21.850	32.874	5.510	38.384	21.142	34.754	40.822	18.805	1.181	2xNPT 4"	59.211	6218 C3	6218 C3
L5010/11														65.086	6224 C3	6218 C3
L5810/11 - 2P	14.500	1.873	34.460	21.850	32.874	9.085	41.959	24.717	38.570	45.830	18.805	1.181	2xNPT 4"	65.570	6220 C3	6220 C3
L5810/11														70.444	6228 C3	6220 C3

# W40 NEMA Premium Motors

## ODP - Mechanical Data

### FC Flange

NEMA FRAME	BA	BC	AJ	AK	BD	S	T	AH	$\alpha$	N° of holes	
254T	4.25	0.250	7.250	8.500	8.875	UNC 1/2"x13	0.250	3.750	45°	4	
256T								3.000			
284TS	4.75		7.250	10.500	11.031			3.000			
284T											4.375
286TS			5.25	11.000	12.500			15.562			5.000
286T											
324TS	5.875		11.000	12.500	15.562			5.000			
324T											3.500
326TS	6.625		14.000	16.000	17.913			5.625			
326T											3.500
364/5TS	7.5	14.000	16.000	17.913	7.000						
364/5T						4.000					
404/5TS	7.5	14.000	16.000	17.913	4.500						
404/5T						8.250					
444/5TS	7.5	14.000	16.000	17.913	8.250						
444/5T						8.250					
447/9TS	7.5	14.000	16.000	17.913	8.250						
447/9T						8.250					



### FD Flange

NEMA FRAME	BA	AJ	AK	BD	S	T	AH	$\alpha$	N° of holes				
254T	4.25	12.500	11.000	14.000	0.828	0.250	3.750	45°	4				
256T							3.000						
284TS	4.75						12.500			11.000	14.000	0.203	
284T													4.375
286TS							5.25			16.000	14.000	18.000	3.500
286T													
324TS	5.875						16.000			14.000	18.000	0.250	
324T													3.500
326TS	6.625						20.000			18.000	21.653	0.203	
326T													3.500
364/5TS	7.5	20.000	18.000	21.653	0.203								
364/5T						4.000							
404/5TS	7.5	20.000	18.000	21.653	0.203								
404/5T						4.500							
444/5TS	7.5	20.000	18.000	21.653	0.203								
444/5T						8.250							
447/9TS	7.5	20.000	18.000	21.653	0.203								
447/9T						8.250							

